

POSTERIOR FIXATION SYSTEM THORACOLUMBAR PEDICULAR SCREWS

PROXiphias™

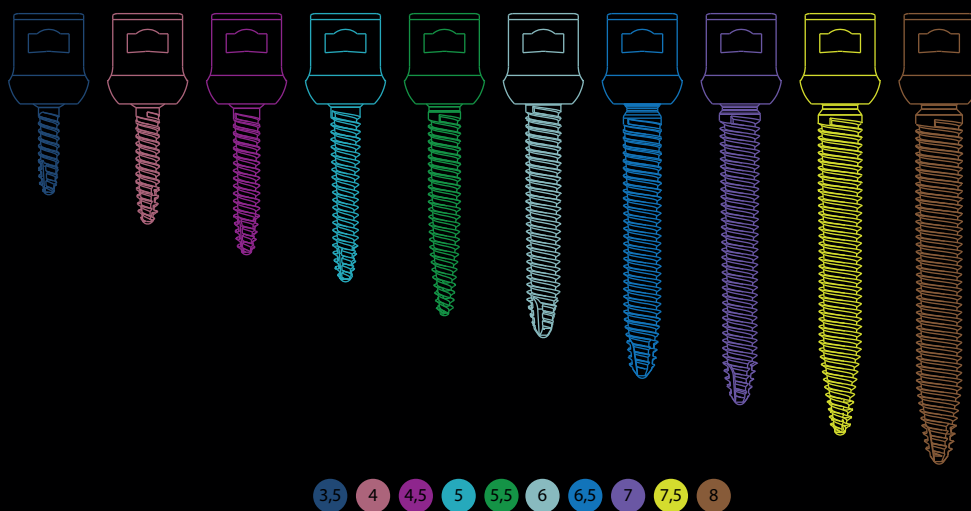
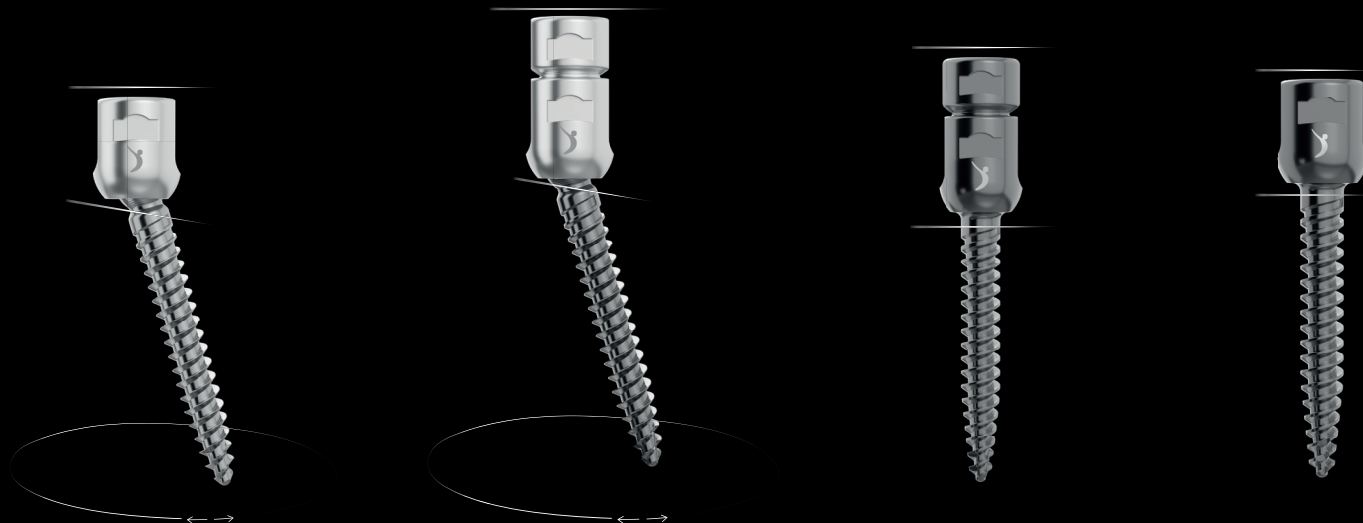


Polyaxial Thoracolumbar Posterior Pedicular Screws
 Polyaxial Listhesis Thoracolumbar Posterior Pedicular Screws
Monoaxial Thoracolumbar Posterior Pedicular Screws
 Monoaxial Listhesis Thoracolumbar Posterior Pedicular Screws

SIZE	 Polyaxial Screw Code	 L. Polyaxial Screw Code	 Monoaxial Screw Code	 L. Monoaxial Screw Code
Ø 3,5 x 25 mm	101.01 3525	N/A	101.05 3525	N/A
Ø 3,5 x 30 mm	101.01 3530	N/A	101.05 3530	N/A
Ø 3,5 x 35 mm	101.01 3535	N/A	101.05 3535	N/A
Ø 3,5 x 40 mm	101.01 3540	N/A	101.05 3540	N/A
Ø 3,5 x 45 mm	101.01 3545	N/A	101.05 3545	N/A
Ø 4,0 x 25 mm	101.01 4025	N/A	101.05 4025	N/A
Ø 4,0 x 30 mm	101.01 4030	N/A	101.05 4030	N/A
Ø 4,0 x 35 mm	101.01 4035	N/A	101.05 4035	N/A
Ø 4,0 x 40 mm	101.01 4040	N/A	101.05 4040	N/A
Ø 4,0 x 45 mm	101.01 4045	N/A	101.05 4045	N/A
Ø 4,5 x 25 mm	101.01 4525	101.03 4525	101.05 4525	101.06 4525
Ø 4,5 x 30 mm	101.01 4530	101.03 4530	101.05 4530	101.06 4530
Ø 4,5 x 35 mm	101.01 4535	101.03 4535	101.05 4535	101.06 4535
Ø 4,5 x 40 mm	101.01 4540	101.03 4540	101.05 4540	101.06 4540
Ø 4,5 x 45 mm	101.01 4545	101.03 4545	101.05 4545	101.06 4545
Ø 5,0 x 30 mm	101.01 5030	101.03 5030	101.05 5030	101.06 5030
Ø 5,0 x 35 mm	101.01 5035	101.03 5035	101.05 5035	101.06 5035
Ø 5,0 x 40 mm	101.01 5040	101.03 5040	101.05 5040	101.06 5040
Ø 5,0 x 45 mm	101.01 5045	101.03 5045	101.05 5045	101.06 5045
Ø 5,0 x 50 mm	101.01 5050	101.03 5050	101.05 5050	101.06 5050
Ø 5,0 x 55 mm	101.01 5055	101.03 5055	101.05 5055	101.06 5055
Ø 5,0 x 60 mm	101.01 5060	101.03 5060	101.05 5060	101.06 5060
Ø 5,5 x 30 mm	101.01 5530	101.03 5530	101.05 5530	101.06 5530
Ø 5,5 x 35 mm	101.01 5535	101.03 5535	101.05 5535	101.06 5535
Ø 5,5 x 40 mm	101.01 5540	101.03 5540	101.05 5540	101.06 5540
Ø 5,5 x 45 mm	101.01 5545	101.03 5545	101.05 5545	101.06 5545
Ø 5,5 x 50 mm	101.01 5550	101.03 5550	101.05 5550	101.06 5550
Ø 5,5 x 55 mm	101.01 5555	101.03 5555	101.05 5555	101.06 5555
Ø 5,5 x 60 mm	101.01 5560	101.03 5560	101.05 5560	101.06 5560
Ø 6,0 x 30 mm	101.01 6030	101.03 6030	101.05 6030	101.06 6030
Ø 6,0 x 35 mm	101.01 6035	101.03 6035	101.05 6035	101.06 6035
Ø 6,0 x 40 mm	101.01 6040	101.03 6040	101.05 6040	101.06 6040
Ø 6,0 x 45 mm	101.01 6045	101.03 6045	101.05 6045	101.06 6045
Ø 6,0 x 50 mm	101.01 6050	101.03 6050	101.05 6050	101.06 6050
Ø 6,0 x 55 mm	101.01 6055	101.03 6055	101.05 6055	101.06 6055
Ø 6,0 x 60 mm	101.01 6060	101.03 6060	101.05 6060	101.06 6060

Polyaxial Thoracolumbar Posterior Pedicular Screws
 Polyaxial Listhesis Thoracolumbar Posterior Pedicular Screws
Monoaxial Thoracolumbar Posterior Pedicular Screws
 Monoaxial Listhesis Thoracolumbar Posterior Pedicular Screws

SIZE	 Polyaxial Screw Code	 L. Polyaxial Screw Code	 Monoaxial Screw Code	 L. Monoaxial Screw Code
Ø 6,5 x 30 mm	101.01 6530	101.03 6530	101.05 6530	101.06 6530
Ø 6,5 x 35 mm	101.01 6535	101.03 6535	101.05 6535	101.06 6535
Ø 6,5 x 40 mm	101.01 6540	101.03 6540	101.05 6540	101.06 6540
Ø 6,5 x 45 mm	101.01 6545	101.03 6545	101.05 6545	101.06 6545
Ø 6,5 x 50 mm	101.01 6550	101.03 6550	101.05 6550	101.06 6550
Ø 6,5 x 55 mm	101.01 6555	101.03 6555	101.05 6555	101.06 6555
Ø 6,5 x 60 mm	101.01 6560	101.03 6560	101.05 6560	101.06 6560
Ø 7,0 x 30 mm	101.01 7030	101.03 7030	101.05 7030	101.06 7030
Ø 7,0 x 35 mm	101.01 7035	101.03 7035	101.05 7035	101.06 7035
Ø 7,0 x 40 mm	101.01 7040	101.03 7040	101.05 7040	101.06 7040
Ø 7,0 x 45 mm	101.01 7045	101.03 7045	101.05 7045	101.06 7045
Ø 7,0 x 50 mm	101.01 7050	101.03 7050	101.05 7050	101.06 7050
Ø 7,0 x 55 mm	101.01 7055	101.03 7055	101.05 7055	101.06 7055
Ø 7,0 x 60 mm	101.01 7060	101.03 7060	101.05 7060	101.06 7060
Ø 7,5 x 30 mm	101.01 7530	101.03 7530	101.05 7530	101.06 7530
Ø 7,5 x 35 mm	101.01 7535	101.03 7535	101.05 7535	101.06 7535
Ø 7,5 x 40 mm	101.01 7540	101.03 7540	101.05 7540	101.06 7540
Ø 7,5 x 45 mm	101.01 7545	101.03 7545	101.05 7545	101.06 7545
Ø 7,5 x 50 mm	101.01 7550	101.03 7550	101.05 7550	101.06 7550
Ø 7,5 x 55 mm	101.01 7555	101.03 7555	101.05 7555	101.06 7555
Ø 7,5 x 60 mm	101.01 7560	101.03 7560	101.05 7560	101.06 7560
Ø 7,5 x 65 mm	101.01 7565	101.03 7565	101.05 7565	101.06 7565
Ø 7,5 x 70 mm	101.01 7570	101.03 7570	101.05 7570	101.06 7570
Ø 7,5 x 75 mm	101.01 7575	101.03 7575	101.05 7575	101.06 7575
Ø 7,5 x 80 mm	101.01 7580	101.03 7580	101.05 7580	101.06 7580
Ø 8,0 x 40 mm	101.01 8040	N/A	101.05 8040	N/A
Ø 8,0 x 45 mm	101.01 8045	N/A	101.05 8045	N/A
Ø 8,0 x 50 mm	101.01 8050	N/A	101.05 8050	N/A
Ø 8,0 x 55 mm	101.01 8055	N/A	101.05 8055	N/A
Ø 8,0 x 60 mm	101.01 8060	N/A	101.05 8060	N/A
Ø 8,0 x 70 mm	101.01 8070	N/A	101.05 8070	N/A
Ø 8,0 x 80 mm	101.01 8080	N/A	101.05 8080	N/A
Ø 8,0 x 90 mm	101.01 8090	N/A	101.05 8090	N/A
Ø 8,0 x 100 mm	101.01 80100	N/A	101.05 80100	N/A
Ø 8,0 x 110 mm	101.01 80110	N/A	101.05 80110	N/A
Ø 8,0 x 120 mm	101.01 80120	N/A	101.05 80120	N/A



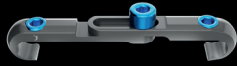
Prodorth Pedicular Screws have a unique design with V-Shaped highly sharp threads, as well as a polished surface which results in successful clinical outcomes with long-term stability.

As it's proven so far, there is a direct relationship between the profile of the pedicle screws and the pull-out strength, hence a strict quality control process is performed on the threads during the production.

- Stronger connection with friction head screw feature
- More reliable tightening with the torx design of setscrew. Reverse angled thread design of setscrew
- Offers wide range of angulation
- Cutting flute design for facilitating initial insertion to bone
- Mono threaded and double threaded options are available on request. In addition, double threaded Pedicle Screws have been designed for decreasing the number of rotations of the screw to reduce the operation time of the entire surgery
- Integratable with posterior cervical systems
- Improved features for use in deformity cases
- Conventional and commonly preferred application
- Strong tulip design to prevent head splay
- Wide range of Polyaxial & Monoaxial screws, connectors and hooks to meet a multitude of patient pathologies
- Colour-coded implants for easy identification and user-friendly instrumentation to streamline the procedure
- Titanium / Ti6Al4V (ASTM F 136) is used as raw materials for Prodorth pedicle screws and these are originated only from our reliable partners in USA

Thoracolumbar Spinal Connectors

PROLOBSTER™



Multiaxial Connectors

SIZE	REF.CODE
30 mm - 45 mm	105.01 3045
38 mm - 53 mm	105.01 3853
45 mm - 60 mm	105.01 4560
53 mm - 68 mm	105.01 5368
60 mm - 75 mm	105.01 6075

PROWALRUS™



Laminar Narrow Blade



Laminar Wide Blade



Pedicular

SIZE	REF.CODE
Narrow Blade - Small	151.01 0017N-S
Narrow Blade - Medium	151.01 0017N-M
Narrow Blade - Large	151.01 0017N-L
Wide Blade - Small	151.01 0017W-S
Wide Blade - Medium	151.01 0017W-M
Wide Blade - Large	151.01 0017W-L
Pedicular - Small	151.01 0018-S
Pedicular - Medium	151.01 0018-M
Pedicular - Large	151.01 0018-L

PROLOBSTER-L™



Linear Connectors

SIZE	REF.CODE
40 mm	105.02 0040
50 mm	105.02 0050
60 mm	105.02 0060
70 mm	105.02 0070
80 mm	105.02 0080
90 mm	105.02 0090
100 mm	105.02 0100

PROLOBSTER-B™



Bar Type Multiaxial Connectors

SIZE	REF.CODE
30 mm - 40 mm	105.01 3040
40 mm - 50 mm	105.01 4050
50 mm - 60 mm	105.01 5060

PROKRILL™



Open



Closed

Lateral Connectors

SIZE	REF.CODE
Lateral Connector Short Open	151.01 0009
Lateral Connector Long Open	151.01 0010
Lateral Connector Short Closed	151.01 0013
Lateral Connector Long Closed	151.01 0014

PROSCOBE™



Single



Double



Double-II



Quadruple



T30

Domino Connectors

SIZE	REF.CODE
Domino Connector Single	151.01 0001
Domino Connector Double / II	151.01 0002
Domino Connector Quadruple	151.01 0003
Domino Connector T30	151.01 0005

Thoracolumbar Spinal Rods



Titanium Rod

<u>SIZE</u>	<u>REF.CODE</u>
Ø 5,5 x 40 mm	104.01 5540
Ø 5,5 x 50 mm	104.01 5550
Ø 5,5 x 60 mm	104.01 5560
Ø 5,5 x 70 mm	104.01 5570
Ø 5,5 x 80 mm	104.01 5580
Ø 5,5 x 90 mm	104.01 5590
Ø 5,5 x 100 mm	104.01 55100
Ø 5,5 x 110 mm	104.01 55110
Ø 5,5 x 120 mm	104.01 55120
Ø 5,5 x 130 mm	104.01 55130
Ø 5,5 x 140 mm	104.01 55140
Ø 5,5 x 150 mm	104.01 55150
Ø 5,5 x 160 mm	104.01 55160
Ø 5,5 x 170 mm	104.01 55170
Ø 5,5 x 180 mm	104.01 55180
Ø 5,5 x 190 mm	104.01 55190
Ø 5,5 x 200 mm	104.01 55200
Ø 5,5 x 250 mm	104.01 55250
Ø 5,5 x 300 mm	104.01 55300
Ø 5,5 x 350 mm	104.01 55350
Ø 5,5 x 400 mm	104.01 55400
Ø 5,5 x 450 mm	104.01 55450
Ø 5,5 x 500 mm	104.01 55500
Ø 5,5 x 550 mm	104.01 55550
Ø 5,5 x 600 mm	104.01 55600

<u>SIZE</u>	<u>REF.CODE</u>
Ø 6,0 x 40 mm	104.01 6040
Ø 6,0 x 50 mm	104.01 6050
Ø 6,0 x 60 mm	104.01 6060
Ø 6,0 x 70 mm	104.01 6070
Ø 6,0 x 80 mm	104.01 6080
Ø 6,0 x 90 mm	104.01 6090
Ø 6,0 x 100 mm	104.01 60100
Ø 6,0 x 110 mm	104.01 60110
Ø 6,0 x 120 mm	104.01 60120
Ø 6,0 x 130 mm	104.01 60130
Ø 6,0 x 140 mm	104.01 60140
Ø 6,0 x 150 mm	104.01 60150
Ø 6,0 x 160 mm	104.01 60160
Ø 6,0 x 170 mm	104.01 60170
Ø 6,0 x 180 mm	104.01 60180
Ø 6,0 x 190 mm	104.01 60190
Ø 6,0 x 200 mm	104.01 60200
Ø 6,0 x 250 mm	104.01 60250
Ø 6,0 x 300 mm	104.01 60300
Ø 6,0 x 350 mm	104.01 60350
Ø 6,0 x 400 mm	104.01 60400
Ø 6,0 x 450 mm	104.01 60450
Ø 6,0 x 500 mm	104.01 60500
Ø 6,0 x 550 mm	104.01 60550
Ø 6,0 x 600 mm	104.01 60600



Curved Rod

<u>SIZE</u>	<u>REF.CODE</u>
Ø 5,5 x 40 mm	104.02 5540
Ø 5,5 x 50 mm	104.02 5550
Ø 5,5 x 60 mm	104.02 5560
Ø 5,5 x 70 mm	104.02 5570
Ø 5,5 x 80 mm	104.02 5580
Ø 5,5 x 90 mm	104.02 5590
Ø 5,5 x 100 mm	104.02 55100
Ø 5,5 x 110 mm	104.02 55110
Ø 5,5 x 120 mm	104.02 55120



Transition Rod

<u>SIZE</u>	<u>REF.CODE</u>
Ø3,5x100 - Ø5,5x250 mm	104.01 3555-T

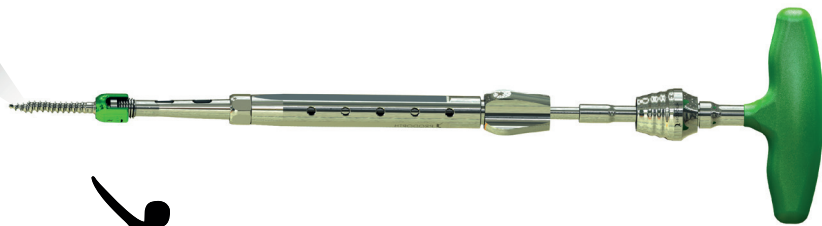
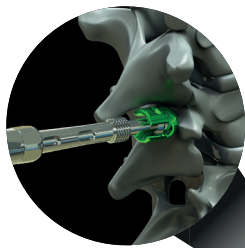
More reliable tightening with the torx designed setscrew

Stronge connection by toothed surface feature



Ultimate pull-out strength with bone tissue by V-Shaped thread design

Cutting flute design for facilitating bone insertion



 **PRODORTH**

