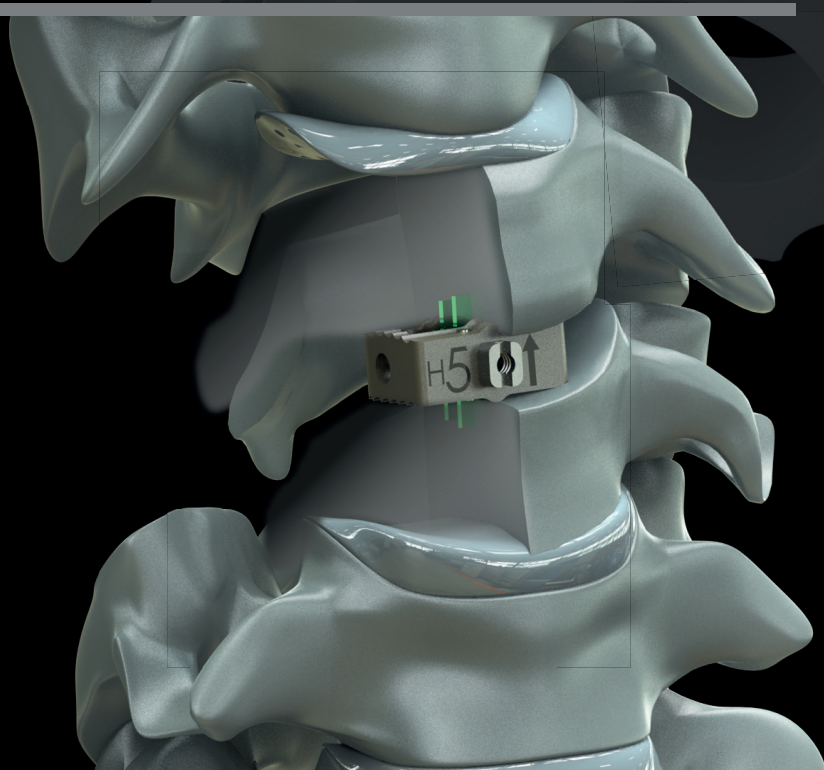
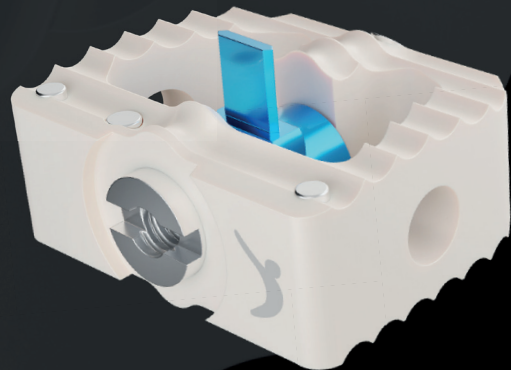
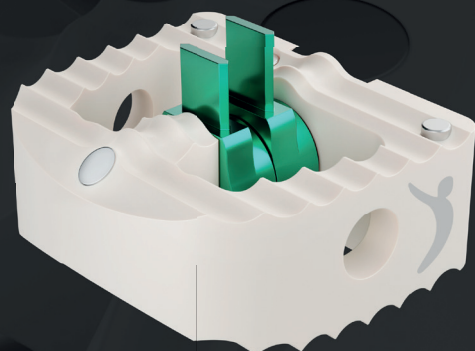
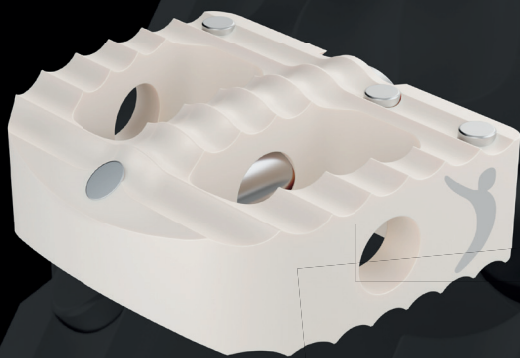
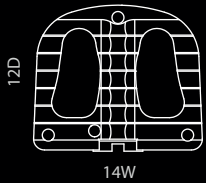


CERVICAL PEEK CAGE BLADED CERVICAL PEEK CAGE

PROYSTER™
PROYSTER-M™
PROYSTER-D™

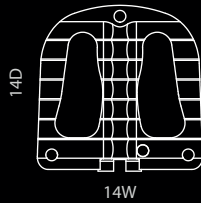


Anterior Cervical Peek Cage



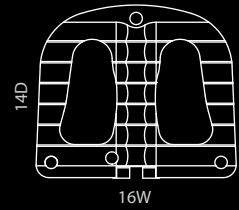
12D x 14W Interbodies

SIZE	REF.CODE
4x12x14 mm	102.06 011204
5x12x14 mm	102.06 011205
6x12x14 mm	102.06 011206
7x12x14 mm	102.06 011207
8x12x14 mm	102.06 011208



14D x 14W Interbodies

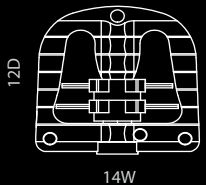
SIZE	REF.CODE
4x14x14 mm	102.06 011404
5x14x14 mm	102.06 011405
6x14x14 mm	102.06 011406
7x14x14 mm	102.06 011407
8x14x14 mm	102.06 011408



14D x 16W Interbodies

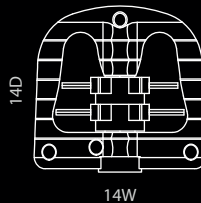
SIZE	REF.CODE
4x14x16 mm	102.06 011604
5x14x16 mm	102.06 011605
6x14x16 mm	102.06 011606
7x14x16 mm	102.06 011607
8x14x16 mm	102.06 011608

Anterior Cervical Peek Cage with Bladed



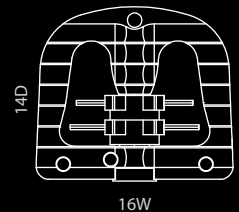
12D x 14W Interbodies

SIZE	REF.CODE
4x12x14 mm	102.06 021204
5x12x14 mm	102.06 021205
6x12x14 mm	102.06 021206
7x12x14 mm	102.06 021207
8x12x14 mm	102.06 021208



14D x 14W Interbodies

SIZE	REF.CODE
4x14x14 mm	102.06 021404
5x14x14 mm	102.06 021405
6x14x14 mm	102.06 021406
7x14x14 mm	102.06 021407
8x14x14 mm	102.06 021408



14D x 16W Interbodies

SIZE	REF.CODE
4x14x16 mm	102.06 021604
5x14x16 mm	102.06 021605
6x14x16 mm	102.06 021606
7x14x16 mm	102.06 021607
8x14x16 mm	102.06 021608

(Mono Bladed and Double Bladed options are available)



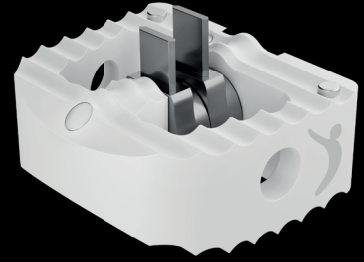
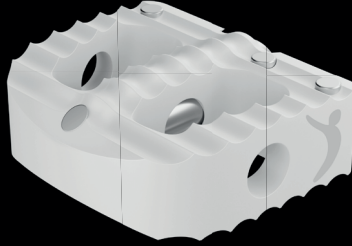
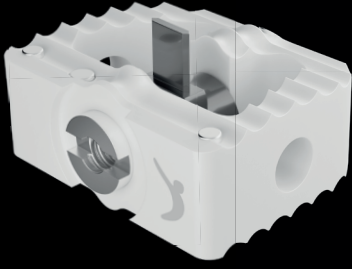
Prodorth Cervical Peek Cages provide a great hold on to the endplates with its blade, which allows it to be used without a plate.

One of the best advantage of Prodorth Cervical Peek Cages is offering a very simple application which is found user-friendly by surgeons.

Prodorth Cervical Peek Cages with mono / double blade options and regular cervical peek cages are available on request.

- Toothed surface is designed to prevent migration
- As for the bladed options, blades provides a more reliable hold on to the endplates
- Anatomical geometry
- Enhanced cage-inserter connection, designed to withstand rotational forces and user-friendly instrumentation to facilitate the procedure
- X-ray marker pins for the visibility
- Made of PEEK material, originated from EVONIK Industries Germany. While titanium alloy materials give opaque image under X-Ray, PEEK materials is able to be seen transparently. This provides efficient follow up of the bone fusion through the implant at the targeted periods
- Maximized Strong Construction / Large Fusion Space ratio
- Various sizes and footprints are available

Anatomical geometry

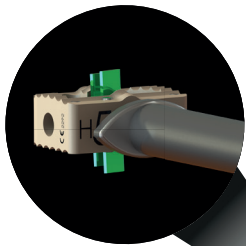


Maximized strong construction / Large fusion space ratio

Toothed surface is
designed to prevent migration



X-ray marker pins for the visibility



 **PRODORTH**

